



Application

- Can be used to transfer clean water or other liquids similar to water in physical and chemical properties
- Suitable for industrial use and urban water supply, pressure boosting for high buildings and fire fighting, garden irrigation, long-distance water transfer, heating ventilation and air conditioning, circulation and pressure boosting for cold and hot water, and supporting equipment etc.

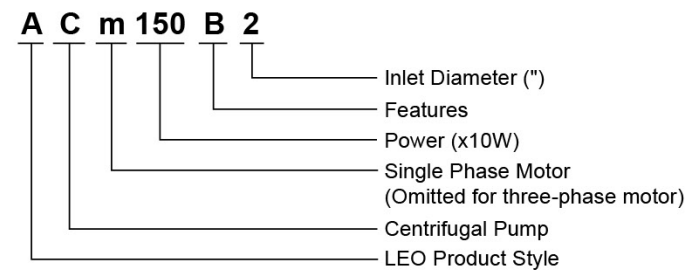
Pump

- Cast iron pump body and support under special anti-rust treatment
- AISI 304 shaft
- Max. liquid temperature: +60°C
- Max. suction: +8 m

Motor

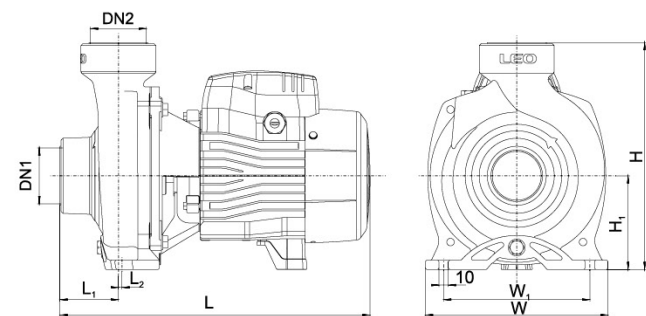
- Low noise&Long life bearing
- Built-in thermal protector for single phase motor
- Insulation class: F
- Protection class: IPX4
- Max.ambient temperature: +40°C
- IE 2 motor (Three phase, power ≥ 0.75kW)

Identification Codes



Technical Data

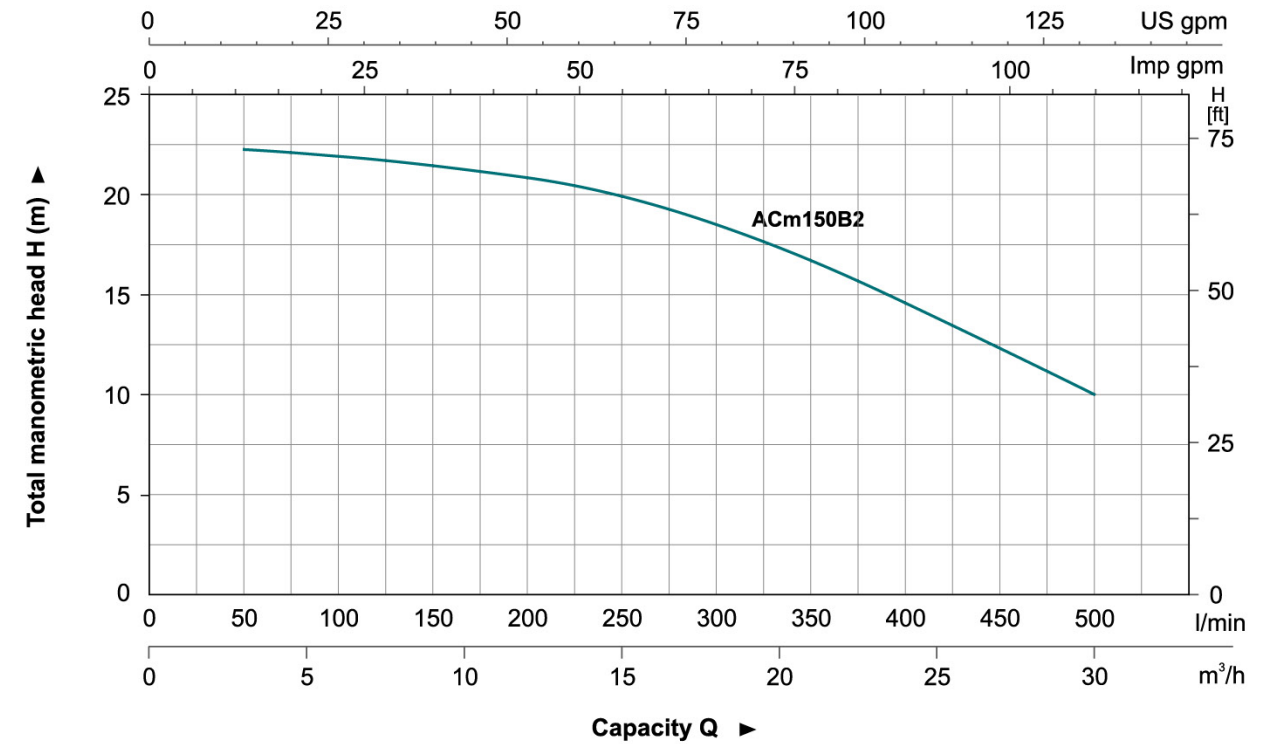
Model		Power		Q(m³/h)	0	6	9	12	15	18	21	24	30
Single Phase	Three Phase	kW	HP	Q(l/min)	0	100	150	200	250	300	350	400	500
ACm150B2	AC150B2	1.5	2	H(m)	22	21.5	21	20.5	19.5	18.3	16.5	14.5	9.5



Dimension

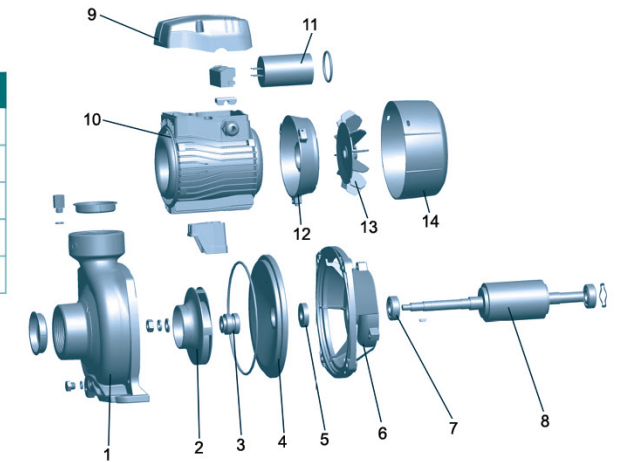
Model	DN1	DN2	L (mm)	W (mm)	H (mm)	L1 (mm)	L2 (mm)	W1 (mm)	H1 (mm)
AC(m)150B2	2"	2"	378	206	263	59	3.5	166	112

Hydraulic Performance Curves



Materials Table

No.	Part	Material	No.	Part	Material
1	Pump body	HT 200	10	Stator	
2	Impeller	AISI304/Brass	11	Capacitor	
3	Mechanical seal	Carbon/Ceramic	12	Rear cover	ZL102
4	Support cover	HT200	13	Fan	PP
5	Oil seal		14	Fan cover	PP
6	Support	ZL200			
7	Bearing				
8	Rotor				
9	Terminal box	PA6-GF25			



Package Information

Model	GW (Kgs)	L (mm)	W (mm)	H (mm)	Quantity (PCS/20'TEU)
AC(m)150B2	20.7	415	225	285	945

