

### Application

- Can be used to transfer clean water or other liquids similar to water in physical and chemical properties
- Suitable for lifting water from the well, sprinkling irrigation in garden, pressure boosting of running water, and supporting equipment etc.

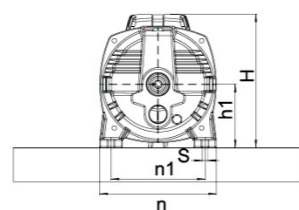
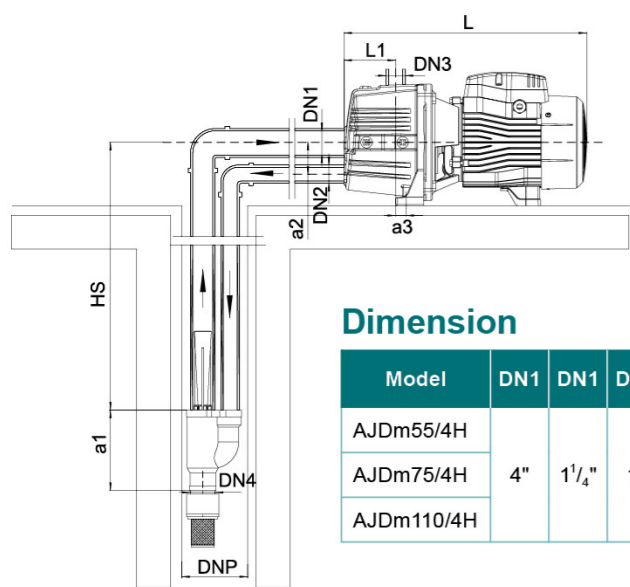
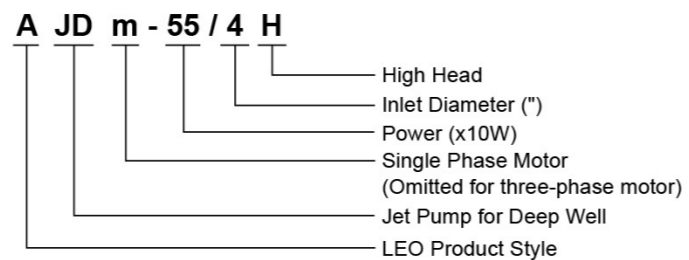
### Pump

- Cast iron pump body and support under special anti-rust treatment
- Stainless steel impeller
- AISI 304 shaft
- Max. liquid temperature: +60°C
- Max. suction: +40 m

### Motor

- Low noise&Long life bearing
- Built-in thermal protector for single phase motor
- Insulation class: F
- Protection class: IPX4
- Max.ambient temperature: +40°C

### Identification Codes



### Dimension

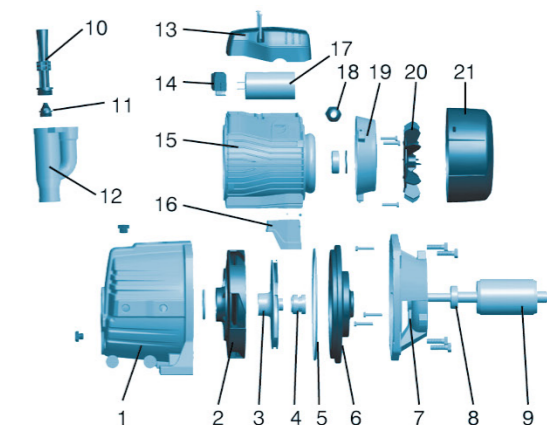
Model	DN1	DN1	DN2	DN3	DN4	L (mm)	L1 (mm)	n (mm)	n1 (mm)	H (mm)	h1 (mm)	a1 (mm)	a2 (mm)	a3 (mm)	S (mm)
AJDm55/4H						370	77	190	150	212	100	160	53	17	10
AJDm75/4H	4"	1 1/4"	1"	1"	1"										
AJDm110/4H						429	90	206	166	236	112			12	

### Technical Data

Model	Power		HS (m)	Q (L/min)	H (m)																
	kW	HP			0	2	4	6	8	10	12	14	16	18	20	22	24	26	28	30	32
AJDm55/4H	0.55	0.75	15	39	35	33	29	27	25	23	21	19	17	15	14	13	-	-	-	-	-
AJDm75/4H	0.75	1.0		50	46	43	40	37	34	32	30	28	26	24	22	20	19	18	17	-	-
AJDm110/4H	1.1	1.5		75	70	66	62	58	55	52	49	47	45	43	41	39	37	35	33	31	29
AJDm55/4H	0.55	0.75	20	32	28	25	23	21	19	17	15	13	-	-	-	-	-	-	-	-	-
AJDm75/4H	0.75	1.0		42	39	36	33	30	27	25	23	21	20	18	17	-	-	-	-	-	-
AJDm110/4H	1.1	1.5		67	62	58	54	51	48	45	43	41	39	37	35	33	31	29	27	-	-
AJDm55/4H	0.55	0.75	25	25	21	18	16	14	12	-	-	-	-	-	-	-	-	-	-	-	-
AJDm75/4H	0.75	1.0		35	32	29	26	23	21	19	17	-	-	-	-	-	-	-	-	-	-
AJDm110/4H	1.1	1.5		59	54	50	47	44	41	38	36	34	32	30	28	-	-	-	-	-	-
AJDm55/4H	0.55	0.75	30	18	15	12	-	-	-	-	-	-	-	-	-	-	-	-	-	-	-
AJDm75/4H	0.75	1.0		28	25	22	19	17	-	-	-	-	-	-	-	-	-	-	-	-	-
AJDm110/4H	1.1	1.5		51	47	43	40	37	34	32	30	28	-	-	-	-	-	-	-	-	-
AJDm55/4H	0.55	0.75	35	21	18	16	-	-	-	-	-	-	-	-	-	-	-	-	-	-	-
AJDm75/4H	0.75	1.0		44	40	36	33	30	27	-	-	-	-	-	-	-	-	-	-	-	-
AJDm110/4H	1.1	1.5		44	40	36	33	30	27	-	-	-	-	-	-	-	-	-	-	-	-
AJDm110/4H	1.1	1.5	40	37	33	30	27	-	-	-	-	-	-	-	-	-	-	-	-	-	-

### Materials Table

No.	Part	Material	No.	Part	Material
1	Pump body	HT 200	14	Terminal board	PC
2	Diffuser	PPO	15	Stator	
3	Impeller	Stainless steel	16	Motor foot	PA6
4	Mechanical seal	Carbon/Ceramic	17	Capacitor	
5	O-ring	NBR	18	Cable holder	
6	Support cover	AISI304/HT200	19	Rear cover	ZL102
7	Support	ZL102	20	Fan	PP
8	Bearing		21	Fan cover	PP
9	Rotor				
10	Venturi tube	PPO			
11	Nozzle	PPO			
12	Ejector	HT200			
13	Terminal box	PA6-GF25			



### Package Information

Model	GW (Kgs)	L (mm)	W (mm)	H (mm)	Quantity (PCS/20' TEU)
AJDm55/4H	16.65	500	215	240	1053
AJDm75/4H	17.9	500	215	240	1053
AJDm110/4H	23.25	585	230	265	728

