

Application

- It is applicable to household water supply, equipment support, pipeline pressurization, garden watering, vegetable greenhouse watering, fish farming and poultry raising, industrial and mining, water supply and drainage of enterprises and high-rise buildings, central air conditioner and centralized heating circulation system, etc

Pump

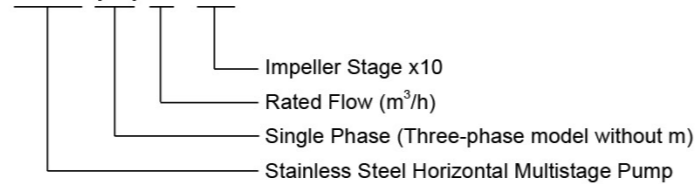
- AISI 304 shaft
- Max. liquid temperature: +85°C
- Altitude: up to 1000 m
- Max. suction: 8 m
- Max. inlet pressure: limited by max. operating pressure
- Max. operating pressure: 10 bar
- Liquid PH Value: 4-10

Motor

- IE2 motor (IE3 motor available on request)
- Motor with copper winding
- Built-in thermal protector for single phase motor
- Insulation class: F
- Protection class: IP55
- Max. ambient temperature: +40°C

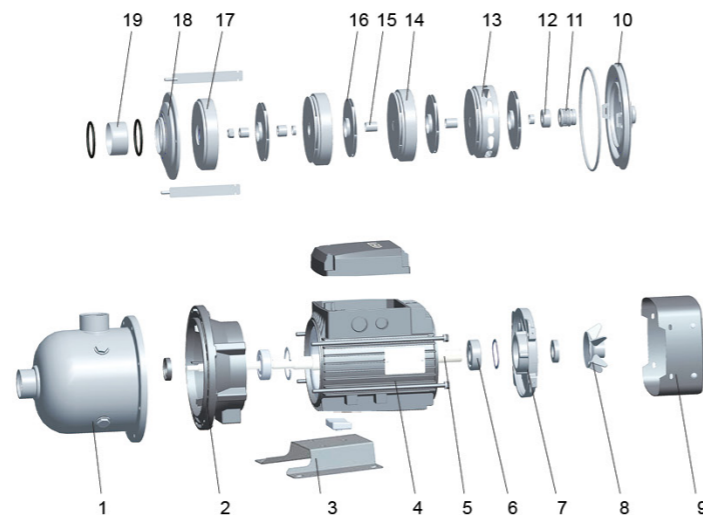
Identification Codes

EDH (m) 2 - 30

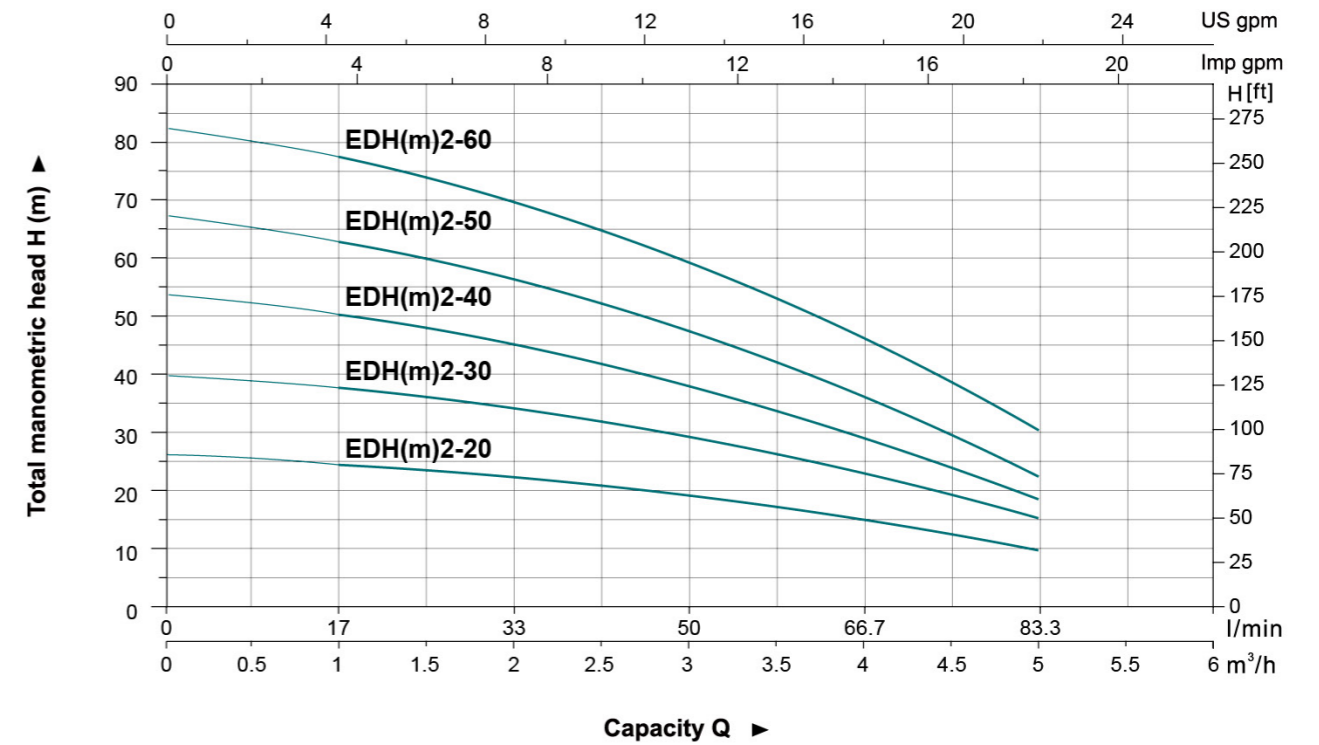


Materials Table

No.	Part	Material
1	Pump body	AISI 304
2	Support	ZL 102
3	Bottom plate	Q235
4	Stator	
5	Rotor	
6	Bearing	
7	Rear cover	ZL 102
8	Fan	PP
9	Fan cover	08F
10	Bracket cover	AISI 304
11	Mechanical seal	Sic/Carbon
12	Positioning sleeve	AISI 304
13	Diffuser 3	AISI 304
14	Diffuser 2	AISI 304
15	Sleeve	AISI 304
16	Impeller	AISI 304
17	Diffuser 1	AISI 304
18	Pressure plate	AISI 304
19	Spacer bush	AISI 304



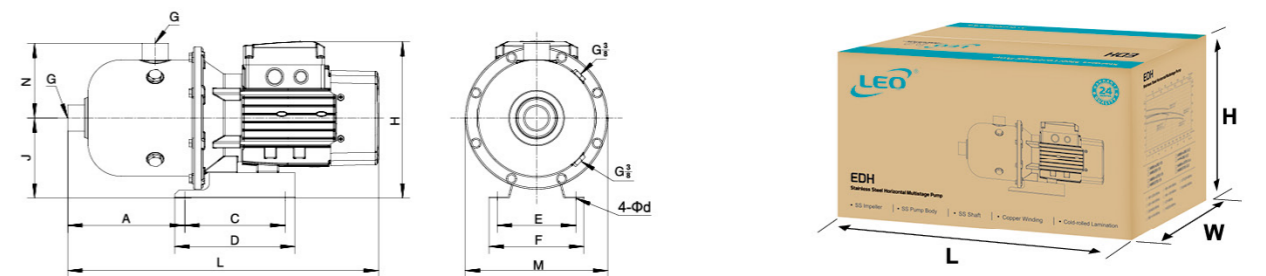
Hydraulic Performance Curves



Technical Data

Model	Power		Q(m³/h) Q(l/min)	1	1.5	2	2.5	3	3.5	4	4.5
	kW	HP		17	25	33	41.7	50	58.3	66.7	75
EDH(m)2-20	0.37	0.5	H (m)	24.5	23.5	22	21	19	17	15	13
EDH(m)2-30	0.55	0.75		37	35.5	32	31	29	26	23	18
EDH(m)2-40	0.75	1.0		49	47.5	43.5	40.5	37.5	33.5	29	23
EDH(m)2-50	0.75	1.0		58.5	56	53.5	49.5	46	41.5	35.5	29.5
EDH(m)2-60	1.1	1.5		75	71	66	62.5	57.5	51.5	45	37.5

Dimension



Model	L	A	C	D	E	F	G	H	J	M	N	d	GW (Kgs)	L x W x H (mm)	Quantity (PCS/20 TEU)
EDH(m)2-20	427	160	138	165	108	130	G1	216	110	Φ195	103	9	11.02	465x225x291	861
EDH(m)2-30	427	160	138	165	108	130	G1	216	110	Φ195	103	9	12.96	465x225x291	861
EDH(m)2-40	427	160	138	165	108	130	G1	216	110	Φ195	103	9	13.62	465x225x291	861
EDH(m)2-50	474	160	138	165	108	130	G1	238	120	Φ195	103	9	16.97	515x225x318	791
EDH(m)2-60	474	160	138	165	108	130	G1	238	120	Φ195	103	9	19.07	515x225x318	791