



### Application

- This pump is mainly used for use in traditional wells, water deposits and collection tanks. Also suitable for small scale irrigation systems.

### Pump

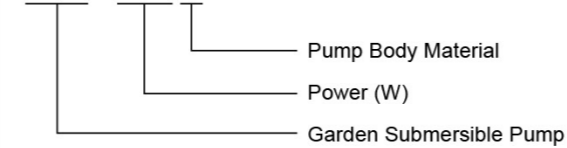
- AISI 304 pump body
- Very high head with multistage-impeller design
- Max. liquid temperature: +35°C
- Max. immersion depth: 7 m
- Max. diameter of particle: 1 mm

### Motor

- Built-in thermal protector
- Insulation class: F
- Protection class: IPX8

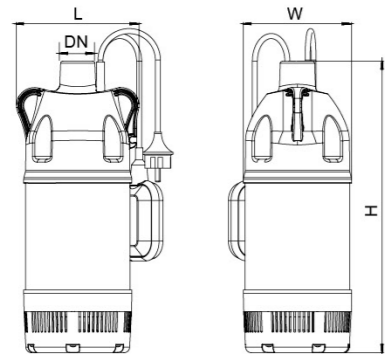
### Identification Codes

#### XKS - 900 S



### Technical Data

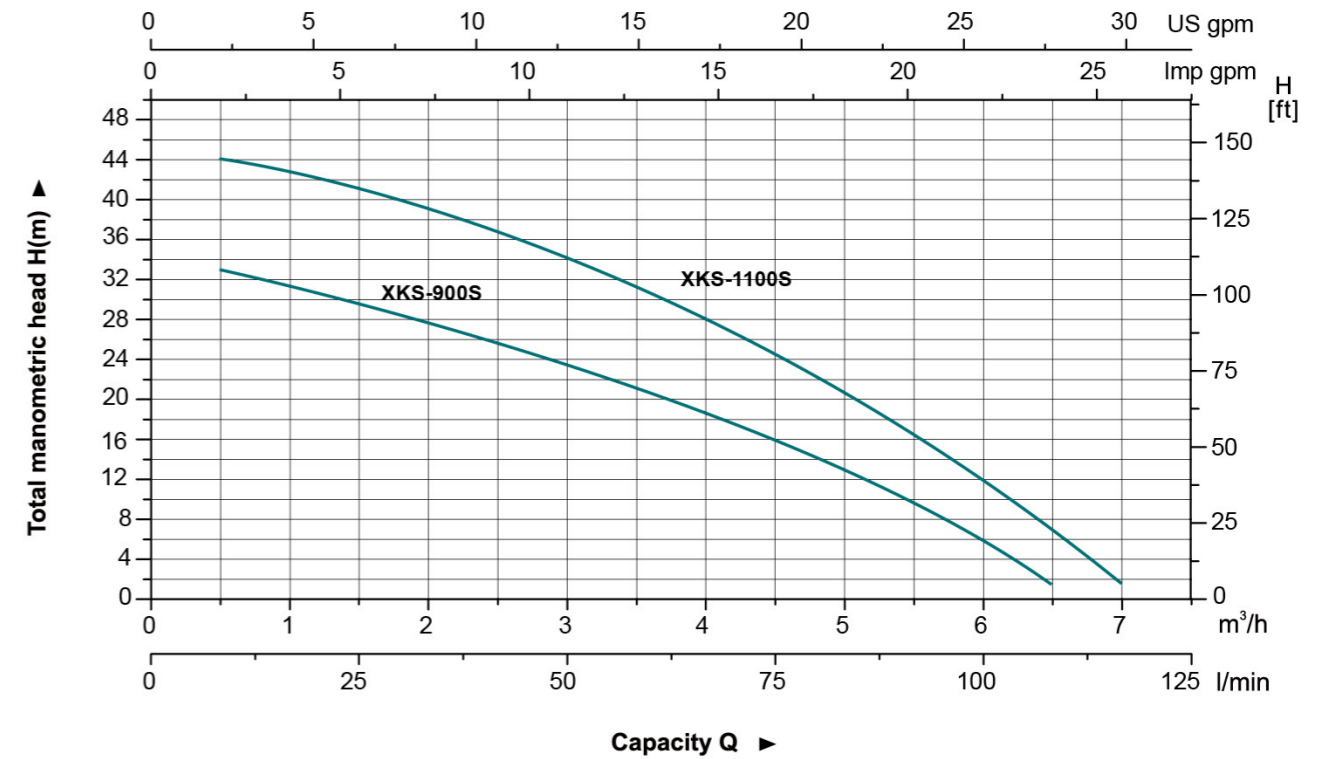
Model	Power		Q(m³/h) Q(l/min)	0.5	1	1.5	2	2.5	3	3.5	4	4.5	5	5.5	6	6.5	7
	W	HP		8.3	16.7	25	33.3	41.7	50	58.3	66.7	75	83.3	91.7	100	108.3	117
XKS-900S	900	1.2	H (m)	32.4	30.9	29.4	27.7	25.8	23.7	21.3	18.6	15.7	12.5	9.11	5.5	1.73	-
XKS-1100S	1100	1.5		44	43	41.3	39.3	36.8	34.1	31.1	27.9	24.5	20.8	16.8	12.5	7.55	1.93



### Dimension

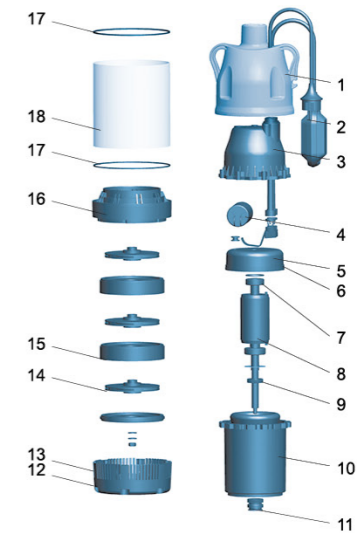
Model	DN	L (mm)	W (mm)	H (mm)
XKS-900S	25	170	150	404
XKS-1100S		170	150	428

### Hydraulic Performance Curves



### Materials Table

No.	Part	Material	No.	Part	Material
1	Pump cover	PP	13	Filter screen	AISI 304
2	Float switch		14	Impeller	PPO
3	Cover	PP	15	Discharge cover	PPO
4	Capacitor		16	Diffuser	PPO
5	Upper plate	ZL102	17	Seal ring	NBR
6	O-ring	NBR	18	Pump body	AISI 304
7	Bearing				
8	Rotor				
9	Oil seal				
10	Stator				
11	Mechanical seal	Carbon/ceramic			
12	Base	PA66			



### Package Information

Model	GW (Kgs)	L (mm)	W (mm)	H (mm)	Quantity (PCS/20'TEU)
XKS-900S	9.9	245	190	455	1380
XKS-1100S	11	245	190	480	1104