



Application

- Can be used to transfer clean water or other liquids similar to water in physical and chemical properties
- Suitable for industrial use and urban water supply, pressure boosting for high buildings and fire fighting, garden irrigation, long-distance water transfer, heating ventilation and air conditioning, circulation and pressure boosting for cold and hot water, and supporting equipment etc.

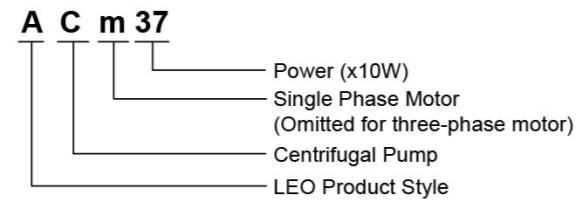
Pump

- Cast iron pump body and support under special anti-rust treatment
- AISI 304 shaft
- Max. liquid temperature: +60°C
- Max. suction: +8 m

Motor

- Low noise&Long life bearing
- Built-in thermal protector for single phase motor
- Insulation class: F
- Protection class: IPX4
- Max.ambient temperature: +40°C

Identification Codes

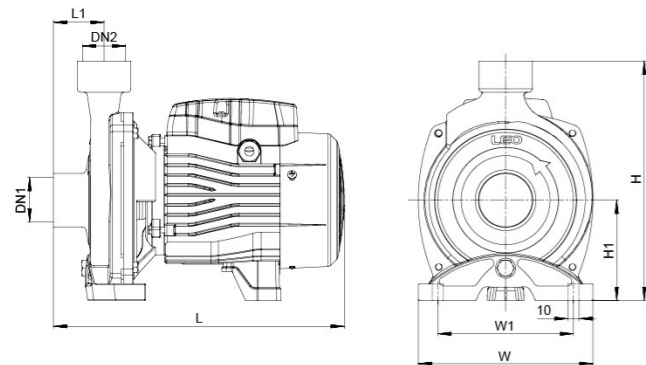


Technical Data

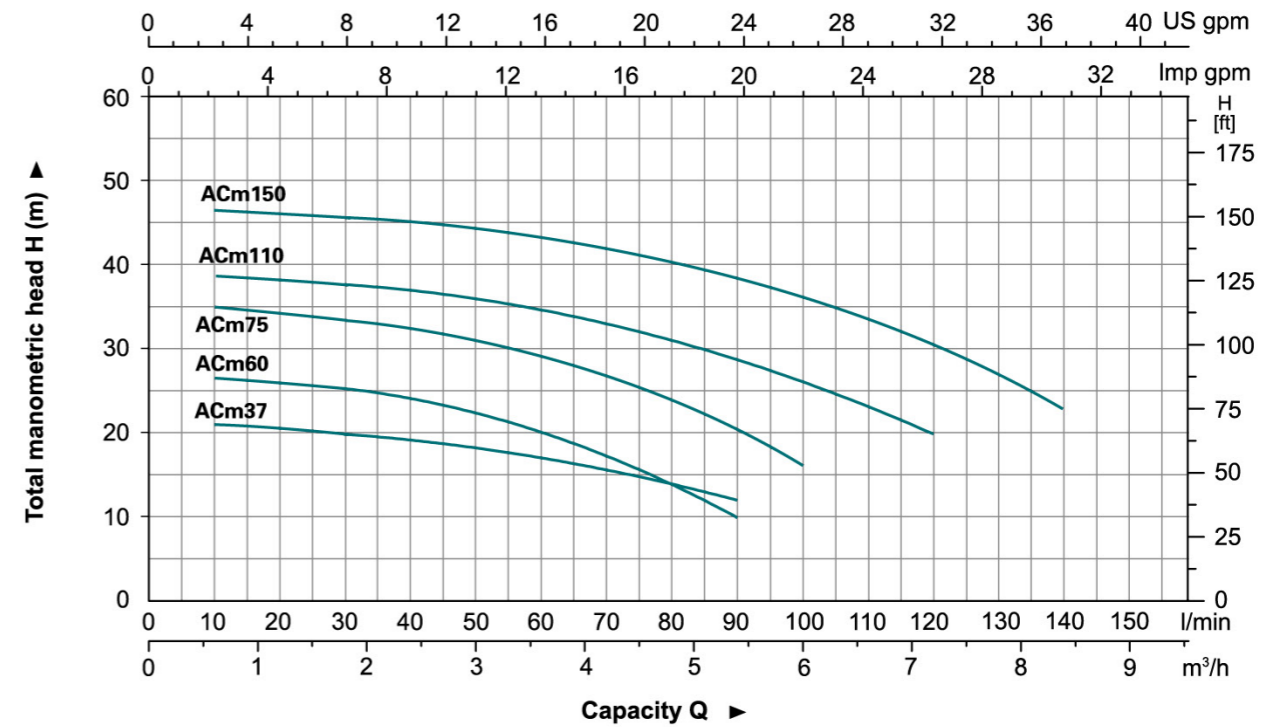
Model		Power		Q(m³/h)		H (m)																
Single Phase	Three Phase	kW	HP	Q(l/min)	0	0.6	0.9	1.2	1.8	2.4	3.0	3.6	4.2	4.5	4.8	5.4	6.0	6.6	7.2	7.8	8.4	
ACm37	-	0.37	0.5		23	21.5	21	21	20.5	19.5	18	17	15.5	14.5	14	12	-	-	-	-	-	-
ACm60	AC60	0.5	0.8		27	26.5	26.2	26	25	24.5	22.5	20	17	15.5	14	10	-	-	-	-	-	-
ACm75	AC75	0.75	1		36	35	34	33.5	33	32	31	29	27	26	23.5	20	16	-	-	-	-	-
ACm110	AC110	1.1	1.5		40	39	38	38	37.5	37	36	35	33	32	31	29	26	23	20	-	-	-
ACm150	AC150	1.5	2		48	47.5	47	46.5	45.5	44.5	43.5	42.5	41.5	41	40.5	39	37	34.5	31	27	22	-

Dimension

Model	DN1	DN2	L (mm)	W (mm)	H (mm)	L1 (mm)	W1 (mm)	H1 (mm)
ACm37	1"	1"	270	157	216	42	122	90
ACm60			298	190	240	44	160	90
ACm75			298	190	240	44	160	100
ACm110	1 1/4"	1 1/4"	359	206	263	50	178	112
ACm150			360	240	286	51	207	115

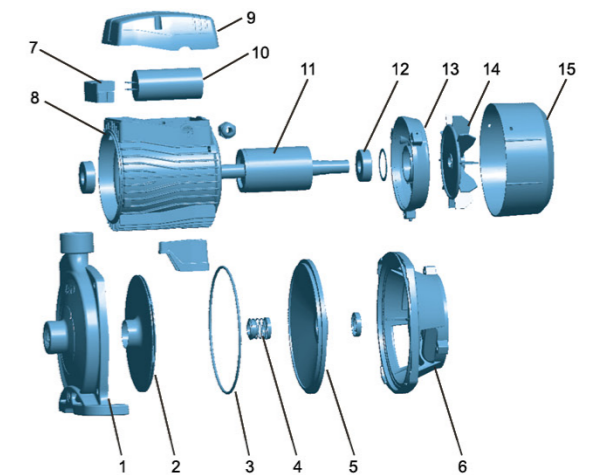


Hydraulic Performance Curves



Materials Table

No.	Part	Material	No.	Part	Material
1	Pump body	HT 200	11	Rotor	
2	Impeller	AISI304/Brass	12	Bearing	
3	O-ring	NBR	13	Rear cover	ZL102
4	Mechanical seal	Carbon/Ceramic	14	Fan	PP
5	Support cover	AISI304/HT200	15	Fan cover	PP
6	Support	ZL102			
7	Terminal board	PC			
8	Stator				
9	Terminal box	PA6-GF25			
10	Capacitor				



Package Information

Model	GW (Kgs)	L (mm)	W (mm)	H (mm)	Quantity (PCS/20' TEU)
ACm37	8.4	290	185	239	2124
ACm60	11.5	333	215	260	1384
ACm75	13.4	333	215	260	1384
ACm110	18.45	383	233	287	987
ACm150	22.8	425	265	210	770

