



Application

- Can be used to transfer clean water or other liquids similar to water in physical and chemical properties
- Suitable for lifting water from the well, sprinkling irrigation in garden, pressure boosting of running water, and supporting equipment etc.

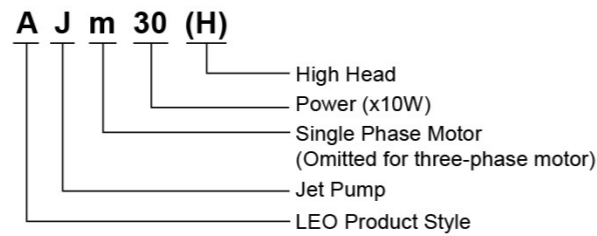
Pump

- Cast iron pump body and support under special anti-rust treatment
- Stainless steel impeller
- AISI 304 shaft
- Max. liquid temperature: +60°C
- Max. suction: +9 m

Motor

- Low noise&Long life bearing
- Built-in thermal protector for single phase motor
- Insulation class: F
- Protection class: IPX4
- Max.ambient temperature: +40 °C

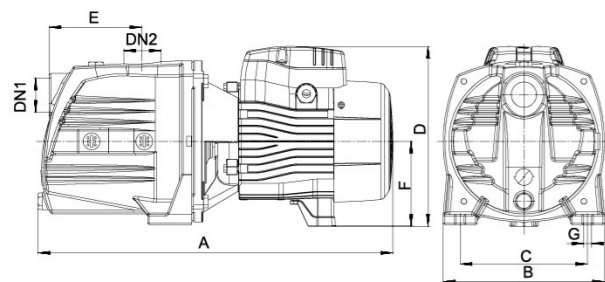
Identification Codes



Technical Data

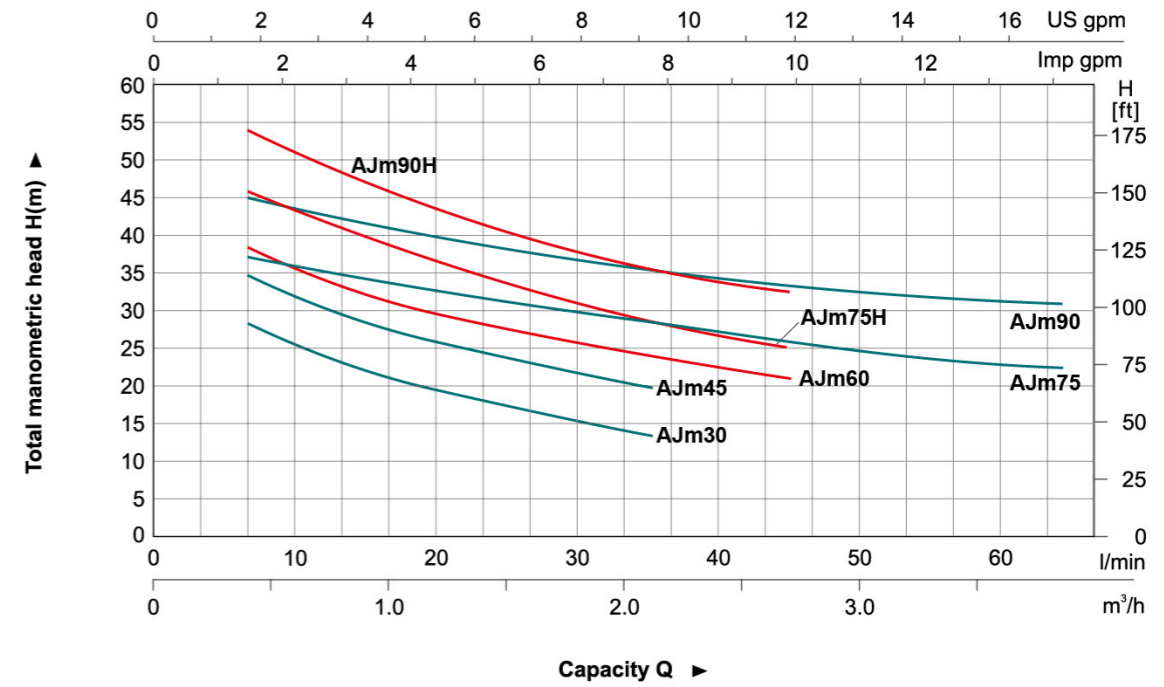
| Model | Power | | Q(m³/h) | H (m) | | | | | | | | | | | | | | | |
|--------|-------|-----|---------|-------|-----|-----|------|-----|------|-----|-----|------|-----|----|-----|-----|-----|--|--|
| | kW | HP | | 0 | 0.3 | 0.6 | 0.9 | 1.2 | 1.5 | 1.8 | 2.1 | 2.4 | 2.8 | 3 | 3.3 | 3.6 | 3.9 | | |
| AJm30 | 0.3 | 0.4 | 0 | 35 | 30 | 26 | 22.5 | 20 | 18 | 16 | 14 | - | - | - | - | - | - | | |
| AJm45 | 0.45 | 0.6 | 0.3 | 41 | 36 | 32 | 28 | 25 | 22 | 20 | 18 | - | - | - | - | - | - | | |
| AJm60 | 0.6 | 0.8 | 0.6 | 45 | 41 | 37 | 33.5 | 31 | 28.5 | 26 | 24 | 22.5 | 21 | - | - | - | - | | |
| AJm75 | 0.75 | 1.0 | 0.9 | 40 | 38 | 36 | 34.5 | 33 | 31.5 | 30 | 29 | 28 | 27 | 26 | 25 | 24 | 23 | | |
| AJm75H | 0.75 | 1.0 | 1.2 | 51 | 47 | 43 | 40 | 37 | 34.5 | 32 | 30 | 27.5 | 25 | - | - | - | - | | |
| AJm90 | 0.9 | 1.2 | 1.5 | 48 | 46 | 44 | 42.5 | 41 | 39.5 | 38 | 36 | 35 | 34 | 33 | 32 | 31 | 30 | | |
| AJm90H | 0.9 | 1.2 | 1.8 | 62 | 57 | 53 | 49 | 46 | 43 | 40 | 37 | 35 | 33 | - | - | - | - | | |

Dimension



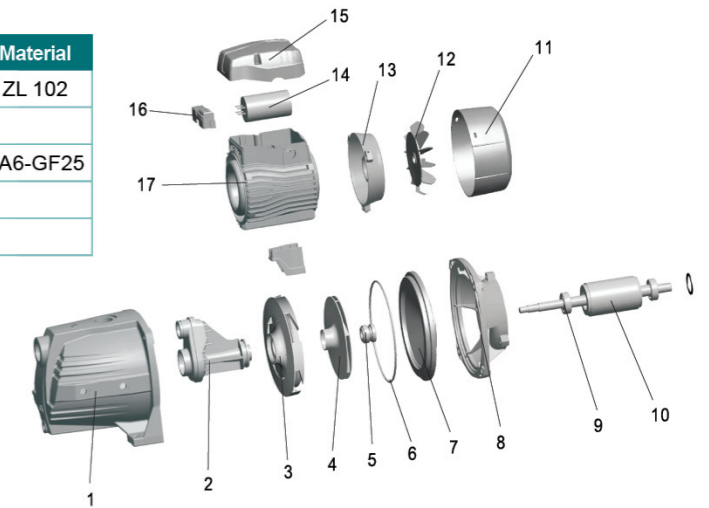
| Model | DN1 | DN2 | A (mm) | B (mm) | C (mm) | D (mm) | E (mm) | F (mm) | G (mm) |
|--------|-----|-----|--------|--------|--------|--------|--------|--------|--------|
| AJm30 | 1" | 1" | 358 | 160 | 105 | 180 | 89.5 | 90 | 10 |
| AJm45 | | | 358 | 160 | 105 | 180 | 89.5 | 90 | 10 |
| AJm60 | | | 418 | 190 | 150 | 212 | 113 | 100 | 10 |
| AJm75 | | | 418 | 190 | 150 | 212 | 113 | 100 | 10 |
| AJm75H | | | 418 | 190 | 150 | 212 | 113 | 100 | 10 |
| AJm90 | | | 418 | 190 | 150 | 212 | 113 | 100 | 10 |
| AJm90H | | | 418 | 190 | 105 | 212 | 113 | 100 | 10 |

Hydraulic Performance Curves



Materials Table

| No. | Part | Material | No. | Part | Material |
|-----|-----------------|----------------|-----|----------------|----------|
| 1 | Pump body | HT 200 | 13 | Rear cover | ZL 102 |
| 2 | Venturi tube | PPO | 14 | Capacitor | |
| 3 | Diffuser | PPO | 15 | Terminal box | PA6-GF25 |
| 4 | Impeller | AISI 304 | 16 | Terminal board | |
| 5 | Mechanical seal | Carbon/Ceramic | 17 | Stator | |
| 6 | O-ring | NBR | | | |
| 7 | Support cover | AISI 304 | | | |
| 8 | Support | ZL 102 | | | |
| 9 | Bearing | | | | |
| 10 | Rotor | | | | |
| 11 | Fan cover | PP | | | |
| 12 | Fan | PP | | | |



Package Information

| Model | GW (Kgs) | L (mm) | W (mm) | H (mm) | Quantity (PCS/20'TEU) |
|--------|----------|--------|--------|--------|-----------------------|
| AJm30 | 9.2 | 390 | 185 | 215 | 1740 |
| AJm45 | 10.15 | 390 | 185 | 215 | 1740 |
| AJm60 | 14.35 | 455 | 215 | 245 | 1170 |
| AJm75 | 15.5 | 455 | 215 | 245 | 1170 |
| AJm75H | 15.5 | 450 | 215 | 245 | 1170 |
| AJm90 | 16.45 | 455 | 215 | 245 | 1170 |
| AJm90H | 16.45 | 450 | 215 | 245 | 1170 |

