



1.5~2.2kW



3.7KW

5.5KW

Application

- Civil engineering
- Mines, quarries, Coal ore & slurries
- Sewage treatment plants
- General pumping purposes

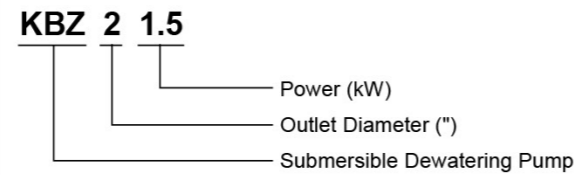
Pump

- Max. liquid temperature: +40°C
- Flow: up to 60 m³/h
- Head: up to 57 m
- Power: 1.5 kW (2 HP) to 15 kW (20 HP)
- Max. Immersion depth: 25 m
- Optional cable length

Motor

- Insulation class: B
- Protection class: IP68

Identification Codes

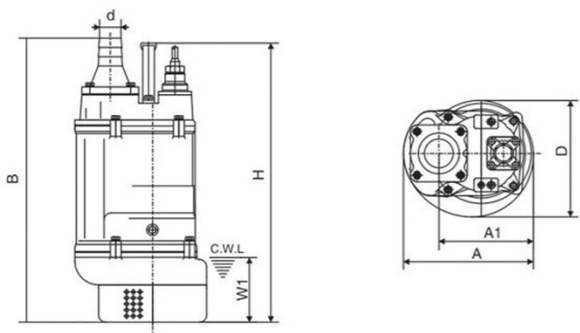


Technical Data

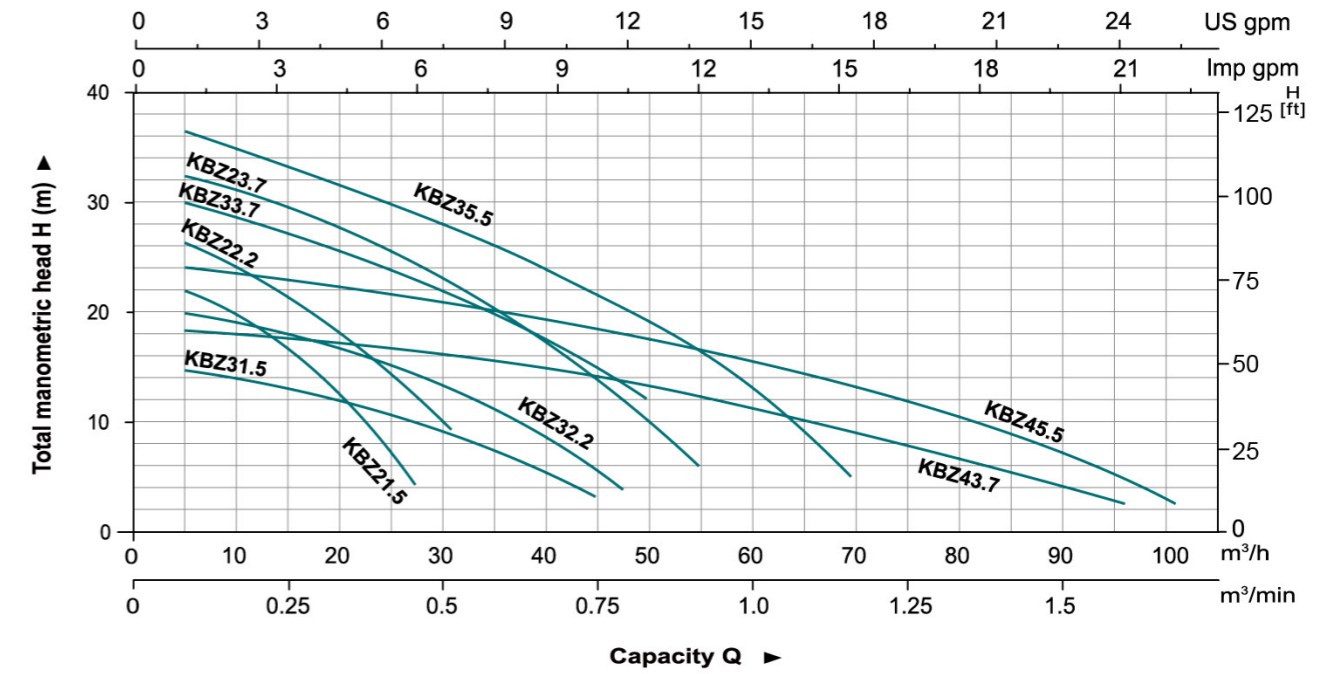
Model	Power		Outlet mm	Max. flow		Max. head m	Max. Solid Dia mm
	kW	HP		m ³ /h	m ³ /min		
KBZ21.5	1.5	2	50	27	0.45	23	8.5
KBZ22.2	2.2	3	50	31	0.52	28	8.5
KBZ23.7	3.7	5	50	50	0.83	33	8.5
KBZ31.5	1.5	2	80	45	0.75	15	8.5
KBZ32.2	2.2	3	80	47	0.78	20.5	8.5
KBZ33.7	3.7	5	80	55	0.92	31	8.5
KBZ35.5	5.5	7.5	80	69	1.15	38	8.5
KBZ43.7	3.7	5	100	96	1.6	18.5	8.5
KBZ45.5	5.5	7.5	100	102	1.7	24.4	8.5

Dimension

Model	d (mm)	A (mm)	A1 (mm)	B (mm)	D (mm)	H (mm)	W1 (mm)
KBZ21.5	50	235	173	517	216	486	120
KBZ22.2	80	235	173	517	216	486	120
KBZ23.7	50	235	173	517	216	486	120
KBZ31.5	80	235	173	517	216	486	120
KBZ32.2	50	283	208	628	252	638	150
KBZ33.7	80	283	208	628	252	638	150
KBZ35.5	100	283	208	642	252	638	150
KBZ43.7	80	306	218	671	259	598	150
KBZ45.5	100	306	218	686	259	598	150

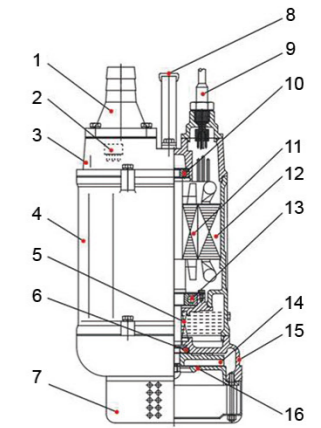


Hydraulic Performance Curves



Materials Table

No.	Part	Material	No.	Part	Material
1	Hose coupling	Cast iron	9	Cable	
2	Thermal protector		10	Bearing	
3	Upper cover	Cast iron	11	Rotor	
4	Motor cover	Cast iron	12	Stator	
5	Oil seal		13	Bearing	
6	Mechanical seal	Lower: Sic-Sic Upper: Carbon-Sic(≤2.2kW) Lower: Sic-Sic Upper: Sic-Sic(≥3.7kW)	14	Impeller	High chrome alloy
7	Strainer	Steel	15	Pump body	Cast iron
8	Handle	Steel	16	Inlet plate	Ductile iron



Package Information

Model	N.W (kg)	GW (kg)	L (mm)	W (mm)	H (mm)	Quantity (PCS/20' TEU)
KBZ21.5	34.5	37.5	585	270	270	648
KBZ22.2	36	39	585	270	270	648
KBZ23.7	60	65	685	325	300	406
KBZ31.5	34.5	37	585	270	270	648
KBZ32.2	36	39	585	270	270	648
KBZ33.7	60	65	685	325	300	406
KBZ35.5	77	84	725	355	370	288
KBZ43.7	61	66	685	325	300	406
KBZ45.5	78	85	725	355	370	288

