



Application

- Whirlpools
- Hydraulic massage pools
- Water circulation

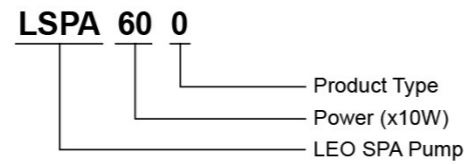
Pump

- Plastic pump body
- Ambient temperature: $\leq 40^{\circ}\text{C}$
- Max. working pressure: 0.3 MPa
- Liquid temperature range: $+5 \sim +50^{\circ}\text{C}$

Motor

- Built-in thermal protect
- Insulation class: F
- Protection class: IPX5
- Equipped with air switch
- Voltage range: 110-120V/60Hz

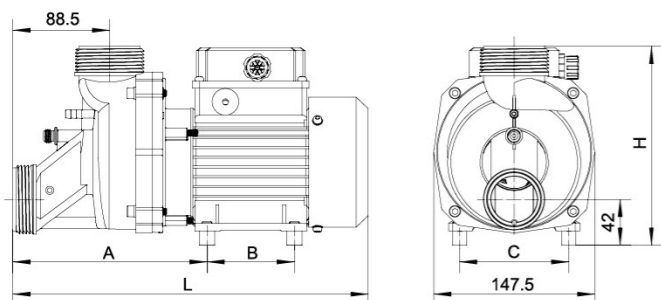
Identification Codes



Technical Data

Model	Power		In / Outlet (mm)	Max.Flow (l/min)	Max.Head (m)
	kW	HP			
LSPA600	0.6	0.8	32/32, 50/50	320	9
LSPA800	0.8	1.1	32/32, 50/50	330	10
LSPA900	0.9	1.2	32/32, 50/50	350	11
LSPA1100	1.1	1.5	32/32, 50/50	400	11
LSPA1300	1.3	1.7	32/32, 50/50	430	12

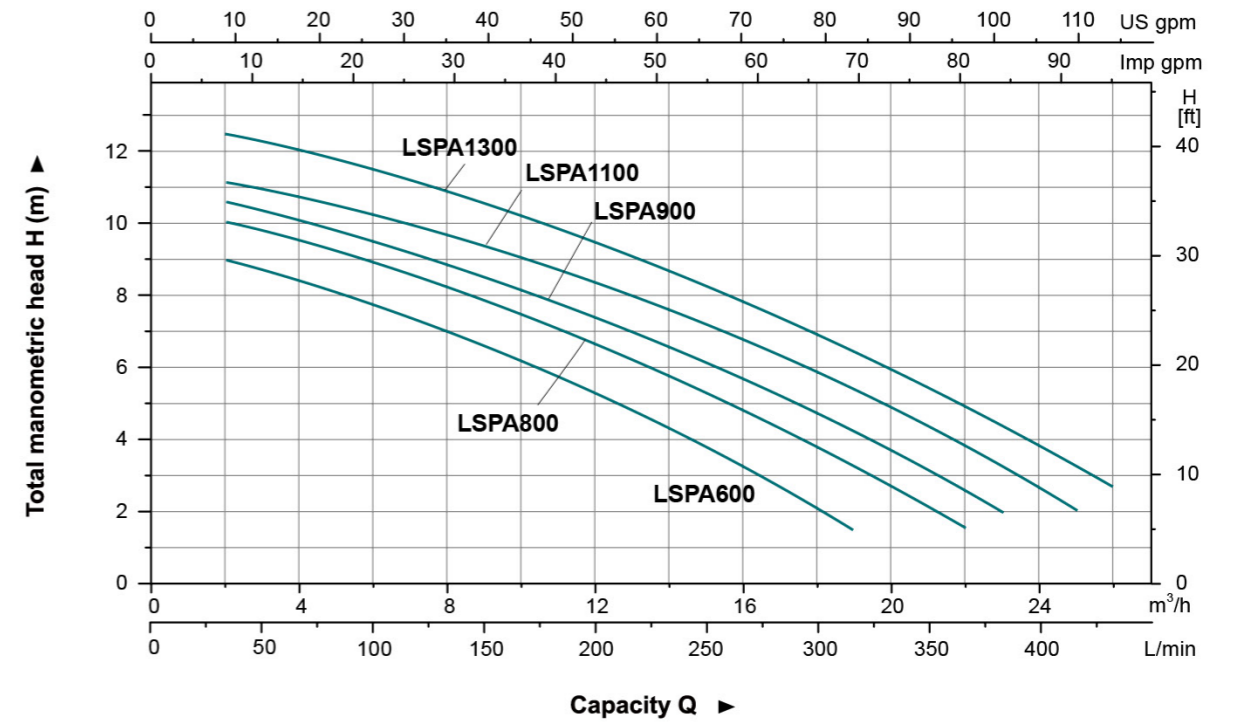
Standard outlet diameter: 50mm. Optional outlet diameter: 32mm



Dimension

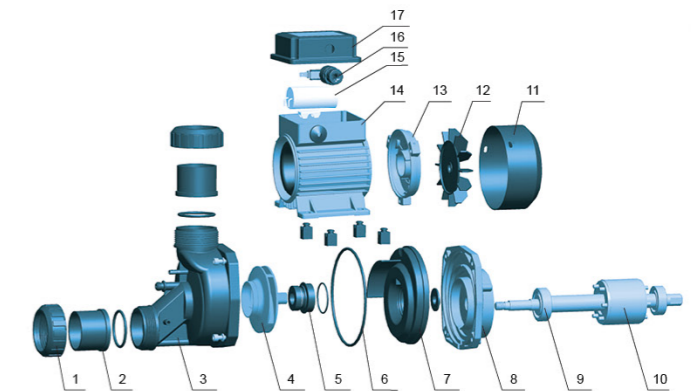
Model	A (mm)	B (mm)	C (mm)	L (mm)	H (mm)
LSPA600	178	80	100	326	182
LSPA800	178	80	100	326	182
LSPA900	175	92	115	344	186
LSPA1100	175	92	115	344	186
LSPA1300	175	92	115	344	186

Hydraulic Performance Curves



Materials Table

No.	Part	No.	Part
1	Nut	12	Fan
2	Connector	13	Rear cover
3	Pump body	14	Stator
4	Impeller	15	Capacitor
5	Mechanical seal	16	Micro switch
6	O-ring	17	Terminal cover
7	Support cover		
8	Support		
9	Bearing		
10	Rotor		
11	Fan cover		



Package Information

Model	GW (Kgs)	L (mm)	W (mm)	H (mm)	Quantity (PCS/20 TEU)
LSPA600	6.2	343	162	187	2760
LSPA800	6.8	343	162	187	2760
LSPA900	8.2	364	162	192	2592
LSPA1100	9.2	364	162	192	2592
LSPA1300	9.9	364	162	192	2592

